



## LED CHANNEL (Series LEDCH) 2', 3', 4', 6', 8'



*Designed for Coves, Garages, Storage & Utility Areas, Workshops*



LED STRIP  
MODULES  
AVAILABLE IN  
DIFFERENT  
LENGTHS, LUMENS,  
WATTS & KELVIN

### Options:

Step Dimming  
Emergency Ballast  
Wire Guards  
Alignment Clips  
Plug & Cords  
V Hooks  
S Hooks  
Aircraft Cable  
Jack Chain  
Reflectors  
Canopy Kit

### Features:

- **Housing** is heavy 23 gauge prime cold rolled steel.
- **Pre-painted** high-reflectance white housing.
- **Mounting** holes are provided for surface, chain, stem-mounted, V Hangers or air-craft cable.
- **Versatile End –Plates** doubles as coupler for continuous mounting.
- **Completely** wired and ready to hang.
- **Available** in 24" to 96" lengths.
- **Snap** together design.

**We carry replacement parts for all the fixtures we manufacture**

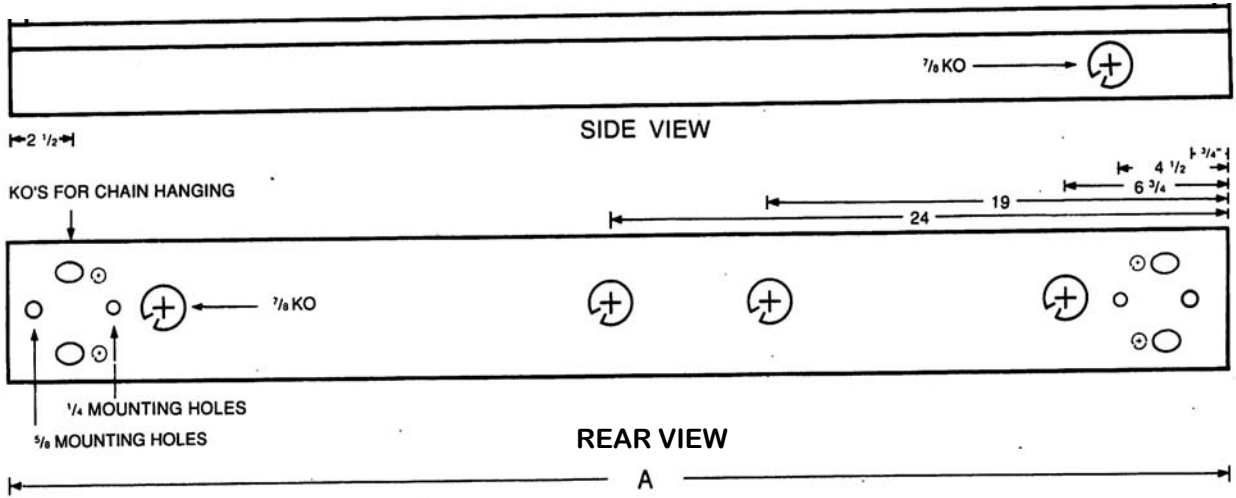
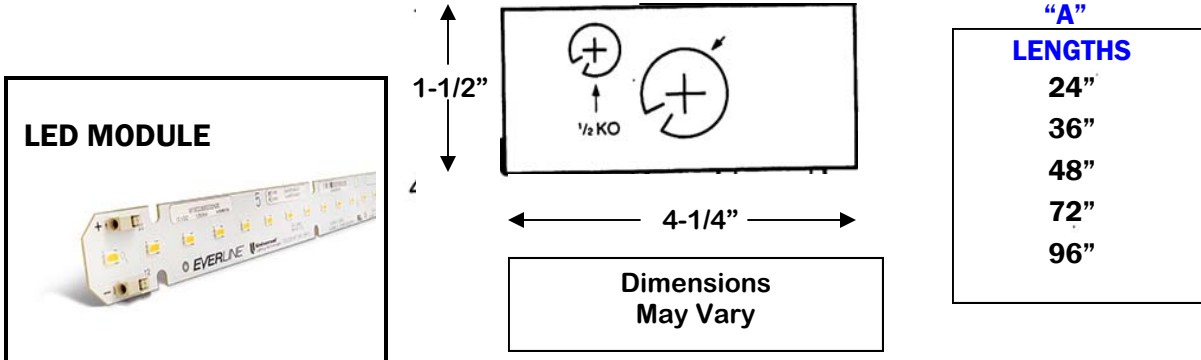
**E. B. LIGHTING & SUPPLIES, INC.**

1107 East Baltimore St., Baltimore MD 21202

410-276-7617

fax: 410-276-7307

# CHANNEL DIMENSIONS



**LED CH**

**ORDERING GUIDE:**

--	--	--	--	--	--

SIZE	LUMEN/ WATTS	KELVIN	VOLTAGE	DIMMING	OPTIONS
24"	OPTIONS				
36" *	2FT-1500/16	3000	C- 120-277v	BLANK- 10V	EMG-EMERGENCY
48"	2FT-2100-21	3500	480-480v	IS STANDARD	BALLAST
72" *	4FT-3100/33	4000			STEP-STEP DIMMING
96"	4FT-3900/36	5000			WG-WIRE GUARDS
	4FT-5600/57				CAN-CANOPY KIT
	4FT-9500/96				
* Call For Spec Info	TCH OPTIONS				
	8FT-6200/66				
	8FT-7800/72				
	8FT-11200/114				
	8FT-19000/192				



**E.B. LIGHTING & SUPPLIES, INC.**  
 1107 East Baltimore Street  
 Baltimore 410-276-7617 MD 21202  
 fax: 410-276-7307

*Specializing in LED & Fluorescent*

[www.eblights.com](http://www.eblights.com)

[eb@eblights.com](mailto:eb@eblights.com)